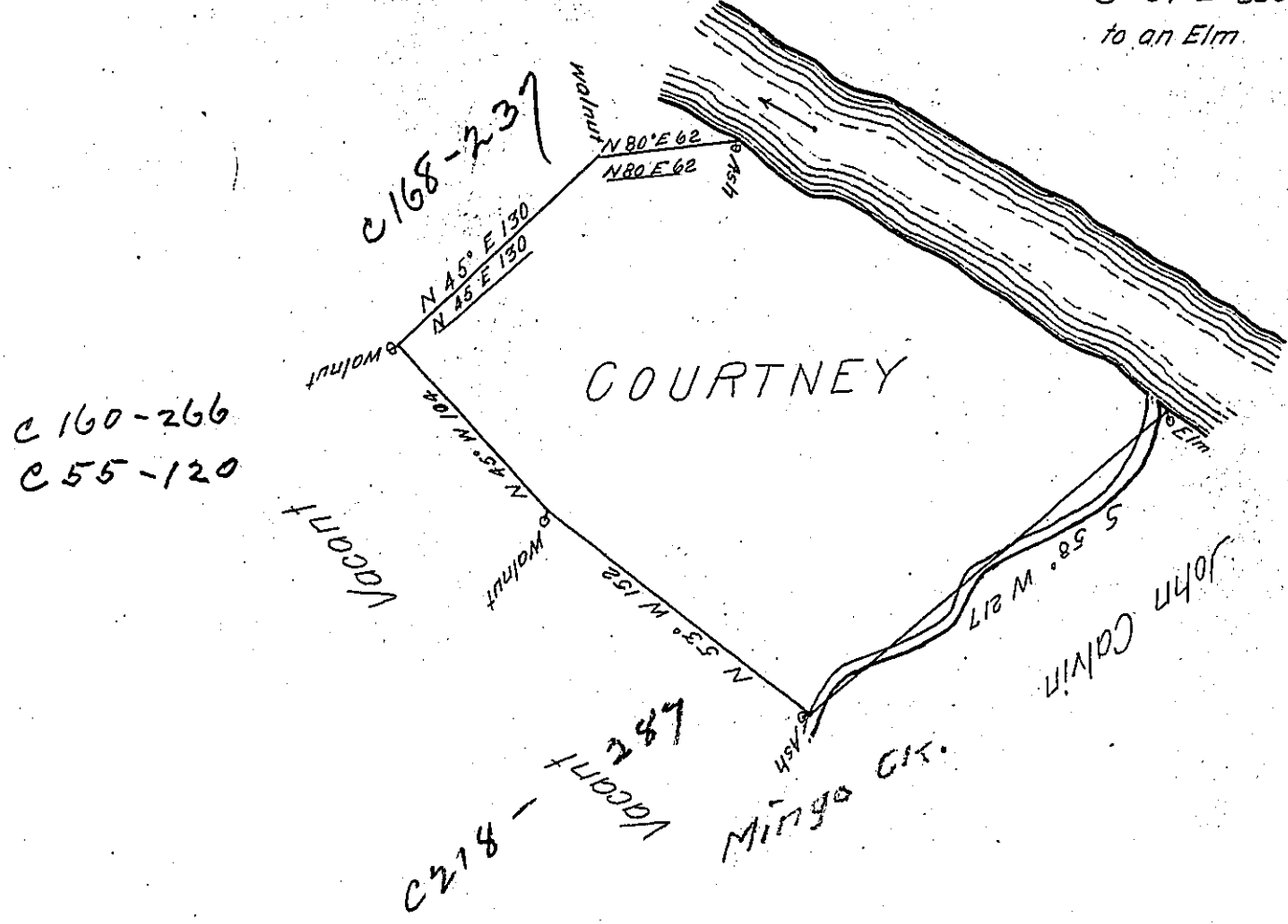


Cours. up $\frac{1}{2}$ Monongahala }
Beginning at an Elm & Run. }
S 59° E 236 P }
to an Elm }



In pursuance of an order No. 3776 dated 26th August 1769 the above is a draught of a tract of land call'd Courtney, situated on the West Side Monongahala containing 297-0-23 acres with the usual allowance for Roads, highways &c. Survey'd 3^d November 1769 for James Calvin

by James Hendricks

To John Lukens Esq
(obl)

IN TESTIMONY that the above is a copy of the original remaining on file in the Department of Internal Affairs of Pennsylvania, made conformably to an Act of Assembly approved the 16th day of February, 1833, I have hereunto set my Hand and caused the Seal of said Department to be affixed at Harrisburg, this twentieth day of March 1905

Loac P. [Signature]
Secretary of Internal Affairs.